

# The Staffordshire Potteries – an archaeological approach



**David Barker**  
Stoke-on-Trent Archaeology Service



Stoke-on-Trent Archaeology Service

Burslem



Longton



Normacot



Stoke-on-Trent Archaeology Service

**PIDDU**  
PROSPE  
LONDON SHOW: 1862  
14, BARTLETT'S BUILDING  
Agent: Mr. F. T. BOWEN  
AND THE  
SUITABLE  
SEND FOR A SAMPLE  
Art Vases, Sugars

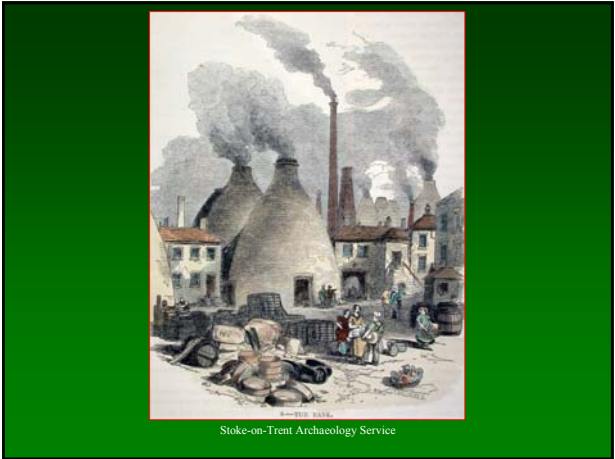
**& Co.,**  
STAFFS,  
S OF  
**SAMIAN,**  
Ware,  
RKETS.

QUEEN (1844)  
er Jugs, Sets of Jugs,  
New Banded Yellow Ware.

Stoke-on-Trent Archaeology Service



Stoke-on-Trent Archaeology Service



Stoke-on-Trent Archaeology Service



Hill Pottery/Royal Works, Burslem

Stoke-on-Trent Archaeology Service



Stoke-on-Trent Archaeology Service



Minton China Works, Stoke



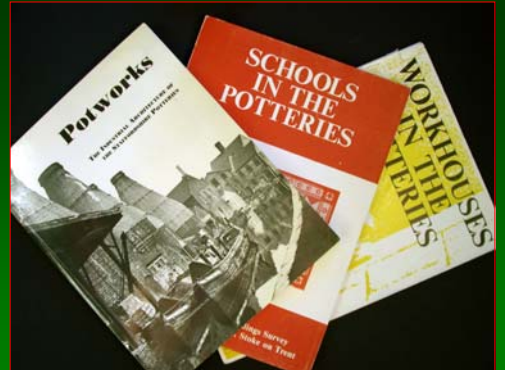
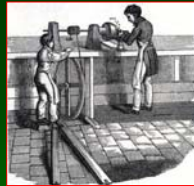
Stoke-on-Trent Archaeology Service



Stoke-on-Trent Archaeology Service



Stoke-on-Trent Archaeology Service



Stoke-on-Trent Historic Buildings Survey, 1982-1985

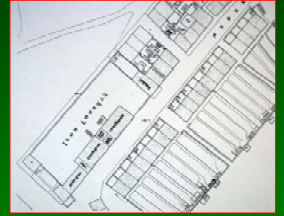
Stoke-on-Trent Archaeology Service



Stoke-on-Trent Archaeology Service



St Gregory's Works, Longton



1856



1878

Stoke-on-Trent Archaeology Service

1900



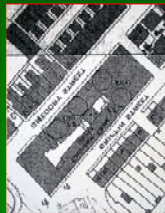
1924



1937



1950



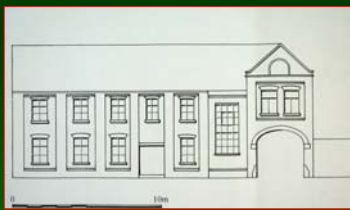
Stoke-on-Trent Archaeology Service



St Gregory's Works, Longton



Stoke-on-Trent Archaeology Service



St Gregory's Works,  
Longton



Fig. 14. St. Gregory's Works, North range elevation onto Grosvenor Street (March 1 1999)



Fig. 15. St. Gregory's Works, North range elevation onto Felix Road (March 1 1999)

Stoke-on-Trent Archaeology Service



Unicorn Pottery, Tunstall

Stoke-on-Trent Archaeology Service



Stanley Works, Longton



Stoke-on-Trent Archaeology Service



Trent Sanitary Works, Hanley



Stoke-on-Trent Archaeology Service



Trent Sanitary Works,  
Hanley



Stoke-on-Trent Archaeology Service



Stoke-on-Trent Archaeology Service



Woodland Street,  
Tunstall



Stoke-on-Trent Archaeology Service



St Andrew's Square,  
Stoke-on-Trent



Stoke-on-Trent Archaeology Service

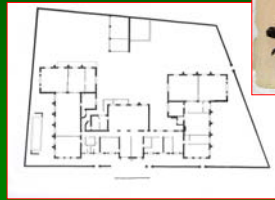


Waterloo Road, Cobridge

Stoke-on-Trent Archaeology Service



Etruria Board School



Stoke-on-Trent Archaeology Service



Harpfield House, 1917



Stoke-on-Trent Archaeology Service



Coalville Estate, early 1950s



Stoke-on-Trent Archaeology Service



Cotehouse Farm



Stoke-on-Trent Archaeology Service