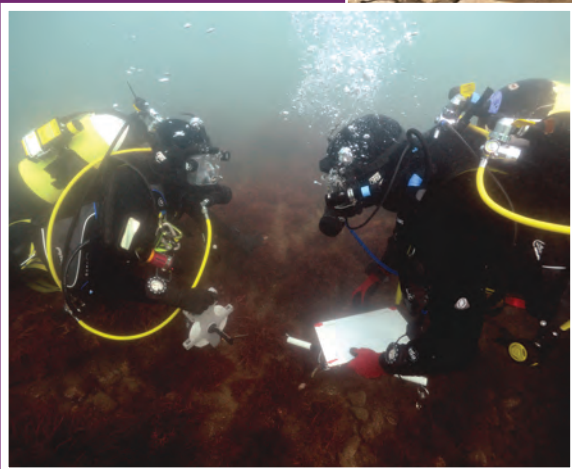


CiFA

Chartered
Institute for
Archaeologists

About professional accreditation



PCiFA
ACiFA
MCiFA

CIfA – the Chartered Institute for Archaeologists – is your professional home for archaeology. CIfA is a network of thousands of professional archaeologists working together for high standards and great careers. Being part of CIfA connects you with professional communities, helping you to develop your knowledge and support your career journey.

By professional we don't just mean people who are paid to do their work. We want anyone engaged in archaeology or heritage to be part of our professional community.



What is professional accreditation?

Professional accreditation is a formal recognition of your skills, knowledge and behaviours and how you use these to carry out your work effectively to professional standards. It is a significant achievement for anyone.

Accreditation is different from academic qualifications. It shows that you can also apply your knowledge and skills to real-world scenarios.



“ Being a ClfA-accredited member means more than post-nominals; it demonstrates professionalism and gives my work authority, so it is recognised by others outside the profession. It signals that my skills, understanding and competence have been accepted through peer-review. It gives others reassurance that I work to standards, am accountable and committed to further development. Above all, it gives me agency and allows me to contribute to the development of our profession. You’ll never regret becoming an accredited member, only that it took you so long! ”

Jonathan Berry,
Member (MClfA), Senior
Inspector of Ancient
Monuments and Archaeology



Why should you be accredited?

Accreditation is an important investment for your career, enhancing your reputation, opportunities and connection to the profession.

What accreditation does for you

- **it recognises your skills and knowledge** – accreditation shows that your expertise has been recognised by peers in the archaeology profession
- **it reflects your professional dedication and commitment to ethical practice** – accreditation shows your commitment to ClfA's ethical *Code of conduct* and professional standards. This demonstrates your dedication to working responsibly and serving society, which are core principles of the profession
- **it gives you status and boosts self-esteem** – you can use ClfA's widely recognised designations after your name, which shows others that you are a skilled professional. Many people feel more confident and respected after achieving professional accreditation
- **it is highly regarded by employers** – professional accreditation is often preferred by employers when recruiting and by clients as part of the tendering process. It also enhances your professional credibility as an expert witness or when giving advice to others
- **it provides access to a community of professional archaeologists** – being part of ClfA offers valuable opportunities for knowledge exchange, networking and staying updated on the latest good practice. This is essential for career development or business growth



“ I joined ClfA as I wanted to be a recognised member of the archaeological industry and to be acknowledged for the experience I have gained throughout my career thus far. ”

Rachel Glaves,
Practitioner (PCfA),
Archaeological Site
Assistant



As well as advancing your career, accreditation helps to increase the overall standing and influence of archaeology as a profession.

What accreditation does for archaeology

- **it promotes a culture of excellence** – accreditation fosters a culture of quality and shared professional values. This motivates archaeologists to maintain high standards of practice and behaviour.
- **it ensures the use of the latest industry standards and practices** – our members are committed to keeping their skills and knowledge up to date through Continuing Professional Development.
- **it provides credibility and profile** – accreditation is a trusted mark of quality and professionalism. Clients working with accredited archaeologists can be confident that the work will be aligned with professional standards, meeting their needs with reliability and expertise.
- **it provides a collective voice** – a large professional membership strengthens ClfA's advocacy and influence. This allows us to more effectively promote the value of archaeology to wider audiences and ensure that the profession is recognised and appreciated in society.



“My recent role opened my eyes to the international standing accreditation with ClfA provides. Clients are reassured that a ClfA accredited professional has the skills they are looking for. This fosters a better reputation for myself and my company, and stronger relationships for work going forward.”

Gemma Stevenson,
Member (MCIfA), Senior
Project Manager



CIfA's professional pathway

CIfA has three grades of professional accreditation – Practitioner (PCIfA), Associate (ACIfA) and Member (MCIfA). These are stepping-stones on your career pathway in archaeology.

CIfA accreditation is open to all archaeologists (employed or voluntary) who

- can demonstrate they have the knowledge, skills and behaviours for the level of accreditation they are applying for
- agree to uphold the values of the Institute set out in our *Code of conduct*



“ It’s important to me to be recognised through accreditation, which is an acknowledgement from peers who understand and also appreciate my knowledge. ”

Natalie Aldrich,
Associate (ACIfA), Senior
Heritage Consultant

Use
this QR
code to access
our Join
pages!





Practitioner (PCIfA) – on the right path while you have been studying, training or working you will have been closely supervised. PCIfAs will still be under supervision but this accreditation demonstrates you are able to use your own judgement and take responsibility for your own work.

PCIfA

Associate (ACIfA) – building your career portfolio:

you will have developed your knowledge, competence and confidence in your area of work. ACIfA accreditation demonstrates that you take responsibility for your work within a structured working environment and regularly deal with complex and non-routine situations.

ACIfA



Member (MCIfA) – recognising your expertise:

MCIfA accreditation is a recognition that you have achieved a high level of professional competence. MCIfAs have authoritative knowledge and depth of understanding of the sector and of a broad range of historic environment practices. You take full responsibility for your work and are confident to make decisions across a broad range of complex, technical or professional activities.

MCIfA

What to do next

To start on your pathway to professional accreditation

- **look at our competence matrix** to find out what you need to demonstrate for the level of accreditation that best matches your skills, knowledge and behaviours
- **attend an accreditation workshop or watch our recorded guidance** to get a better understanding of the application process and what to provide
- **start to gather examples of your work** to support your application and to demonstrate your knowledge and skills
- **begin your application!**

Already a Student or Affiliate member of CIFA? Make sure you sign up to our professional pathways scheme. You'll receive regular ebulletins with resources to support your career development and to help you understand and meet the requirements for professional accreditation.

Completed an archaeological apprenticeship, vocational qualification or employer training scheme? If so, you may be eligible for a fast-track application.

Any questions? Our membership team is always happy to answer questions about the accreditation process and support you in gathering what you need to apply.

Contact us at membership@archaeologists.net

Use
this QR
code to access
our professional
pathways
page



Cifa | Chartered
Institute for
Archaeologists

Contact us at:
Chartered Institute for Archaeologists
Tel: 0118 966 2841
www.archaeologists.net