

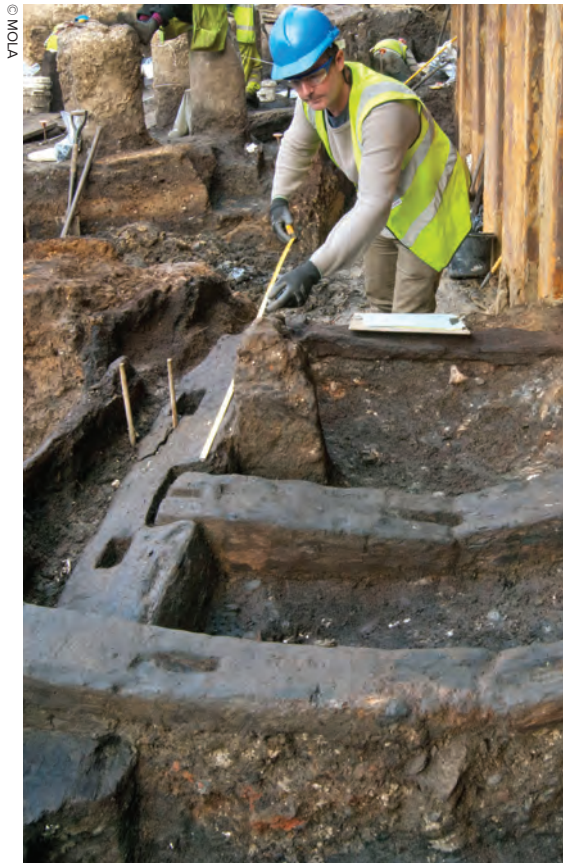
## Opportunities for archaeology with HS2's enabling works and main works civils contracts



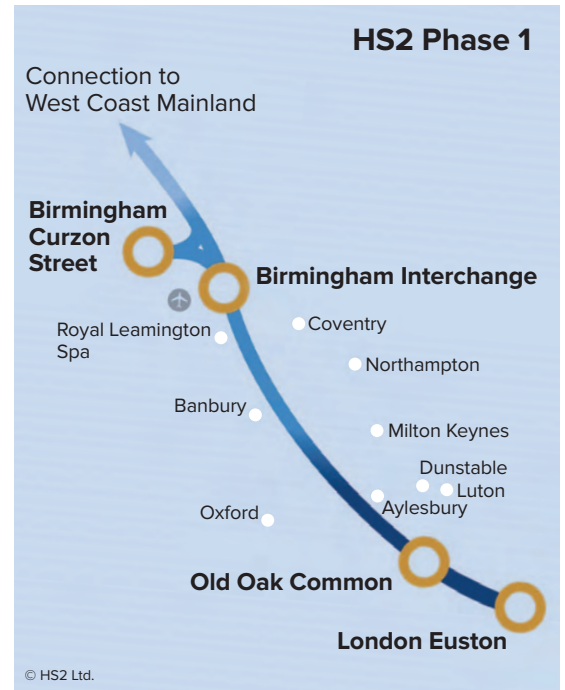
HS2 provides an amazing opportunity to reveal a new understanding of our past as a result of the huge amount of excavation needed.

## Introduction to archaeology

Our physical environment is transforming, faster than at any time in human history. Our cities are growing and the way we travel is being revolutionised through major infrastructure projects, perhaps none more so than HS2. Accredited archaeologists understand how these challenges have been met in the near and distant past, how our modern society has evolved and how we built the places we live in. Accredited archaeologists investigate the evidence of the past and produce crucial data to inform new development. This evidence adds value to society.



## HS2 and archaeology



HS2 provides an amazing opportunity to reveal a new understanding of our past as a result of the huge amount of excavation needed. Phase One – between London and the West Midlands – is approximately 140 miles long. It passes through a whole range of landscapes and there will almost certainly be significant archaeology across the entire length. To the archaeology profession, HS2 represents the largest single project anywhere in the world. As such, an unprecedented number of accredited archaeologists will be employed from the very start to the completion of the project.



# The opportunities

© Headland



## The Chartered Institute for Archaeologists (CIfA) has highlighted a number of opportunities for the joint ventures bidding for the HS2 enabling works and main civils.

- 1** Planning and procurement will be critical to ensuring the successful joint ventures fulfil their responsibilities regarding the archaeology elements of the works. You need to be sure that the archaeologists you engage are bound by a code of ethical conduct, have demonstrated their competence, are committed to developing their skills through CPD and are accountable to CIfA for their conduct. To ensure this is the case, you should engage only CIfA Registered Organisations. These companies have successfully completed a rigorous archaeological quality assurance process inspecting all aspects of their work, and are registered with CIfA for a three-year period.
- 2** There is a significant opportunity for capacity building in the archaeology profession and it will be necessary to train new archaeologists to meet the demands of HS2. You should ensure that your archaeology suppliers have a properly resourced and structured training programme in order to ensure a competent and professional workforce. This may be through formal apprenticeships or workplace learning programmes accredited through vocational qualifications and/or CIfA's pathways to accreditation. Accreditation in archaeology recognises the professionalism of practitioners, improves their careers and attracts new people into archaeology.
- 3** The CSR benefits that good archaeology can bring are significant. You can use archaeology that has been properly planned and funded and carried out by accredited professionals to underpin a range of messages. These can be about corporate ethics, integrity, respect for the environment, developing life skills through participation and responsible business conduct. Accredited professionals will know how to work creatively with communities and can provide you with a programme of public and community engagement. In this way, archaeology can add value to your business.
- 4** HS2 represents the largest single archaeological research programme. As such you must be satisfied that your archaeology partners are imaginatively addressing the research objectives of the project and are committed to creating new knowledge about the past.
- 5** CIfA strongly recommends that all joint ventures, their sub-contractors and consultants only use accredited archaeologists. Members of CIfA are accredited and skilled in the study and care of the historic environment.



## ClfA's role

ClfA champions professionalism in archaeology. It represents the interests of archaeology and archaeologists to government, policy makers and industry, sets standards and issues guidelines, improves member career prospects by promoting and organising training and informing them of developments in professional practice. Through ClfA a client can find the most appropriate accredited archaeologists to work on their project.

## About accredited archaeologists

Accredited archaeologists, like many other professionals, demonstrate to third parties that they have the necessary skills and ethics to carry out work to relevant standards. Being an accredited archaeologist shows that you have a commitment to maintain and enhance your skills and knowledge by signing up to a Code of conduct that requires you to carry out regular CPD. Accreditation provides a clear indication of professionalism, but if any issues arise about the quality of work provided by an accredited archaeologist there is a disciplinary system to pursue this.



Chartered Institute for Archaeologists  
Miller Building, University of Reading, Reading RG6 6AB  
T: 0118 378 6446 | [admin@archaeologists.net](mailto:admin@archaeologists.net) | [www.archaeologists.net](http://www.archaeologists.net)