



DECARBONISING HISTORIC HOUSES

Scope 1 and 2 Carbon Emissions Baseline (2021)

First understand the key sources of carbon emissions and what is driving them, so you focus your efforts where it's going to make the most difference.

1.7 tCO₂e
Per FTE

70 kgCO₂e
Per m² of floor area

65 tCO₂e
Per £1m income

0.62 kgCO₂e
Per visitor

Bishop's Palace

The medieval Bishop's Palace & Gardens is situated in Wells and has been home to the Bishops of Bath and Wells for over 800 years.

It is open for all to enjoy, surrounded by a moat (with resident swans) and with 14 acres of outstanding Royal Horticultural Society (RHS) Partner gardens to explore, as well as the beautiful well pools from which the city takes its name, a gift shop and a café.

Bishop's Palace have recently been on a journey to measure their Scope 1 and 2 carbon

footprint and implement various measures to reach their future decarbonisation targets.

In the near future, The Palace Trust is aiming to expand its carbon footprint measurement to include Scope 3 emissions, and working to reduce their impact across their supply chain. Scope 3 emissions of cultural sector organisations can often prove to be the majority (up to 75%) of emissions as demonstrated by the Gallery Climate Coalition [3], so this is particularly important.



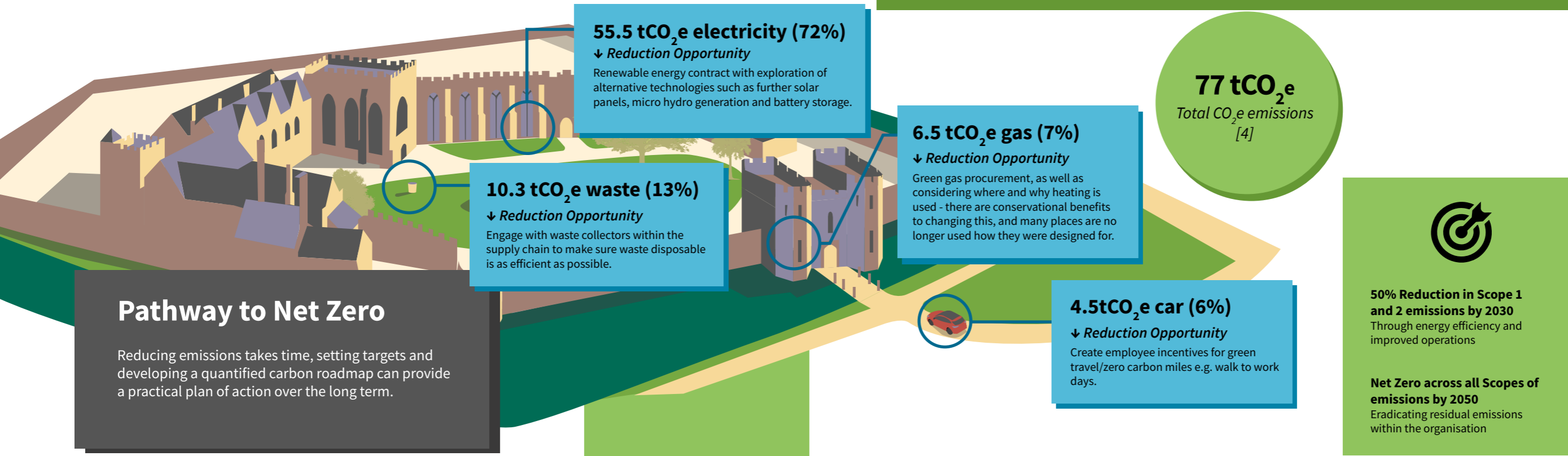
Key Statistics

1,091 m²
office space

125,000
Visitors a year [5]

45
FTE [4]

£1.2m
Turnover [4]



Pathway to Net Zero

Reducing emissions takes time, setting targets and developing a quantified carbon roadmap can provide a practical plan of action over the long term.

What have we done

Water Source Heat Pump
Installed a 22kW Water source heat pump in the moat [1], meeting all heating and hot water for the palace.

Solar Panels
↓ 3% Reduction
Small scale 18kW trial of solar panels on roofs, reduces emissions by approximately 2.5 tCO₂e [2].

Where are we now

2021 Carbon Baseline

Future actions

Energy Efficiency Measures
↓ 7% Reduction
Such as installing and maintaining LED lighting, auto-shutdown on computers in the office and staff training on sustainability.

Electric Vehicle Fleet
↓ 4% Reduction
Introduce an EV to be made available to employees for business use.

Offset remaining emissions
Use high quality & verified offsetting schemes or carbon removal technologies. Look to source from South-west UK schemes backed by Woodland Carbon Code [6].

2011

2018

2021

2025

2030

2050

References

- Otter, N. (2011) 'Stately homes exploit water features for heat pumps', Modern Building Services, 03 August. Available at: https://modbs.co.uk/news/fullstory.php/aid/9524/Stately_homes_exploit_water_features_for_heat_pumps.html (Accessed: 1-15 March 2024).
- Department for Energy Security & Net Zero (DESNZ). (2022) 'Green Book supplementary guidance: valuation of energy use and greenhouse gas emissions for appraisal, Data tables 1 to 19: supporting the toolkit and the guidance'. Available at: <https://view.officeapps.live.com/op/view.aspx?src=https%3A%2F%2Fassets.publishing.service.gov.uk%2Fmedia%2F6567994fc-c1ec5000d8eef17%2Fdata-tables-1-19.xlsx&wdOrigin=BROWSELINK> (Accessed: 1-15 March 2024).
- Gallery Climate Coalition. (2019-2022) 'GCC Carbon Reports'. Available at: <https://galleryclimatecoalition.org/carbon-reports/> (Accessed: 1-15 March 2024).
- The Palace Trust. (2022) 'UNFCCC Race to Zero - Pledge & Plan' and 'Future Net Zero Standard - Accreditation Report - March 2019 - February 2020' Available at: <https://racetozero.unfccc.int/system/race-to-zero/>.
- Kidd, M. Microsoft Teams Conversation with 3ADAPT, 29 January 2024.
- Woodland Carbon Code. (n.d.). Woodland Carbon Code . [online] Available at: <https://woodlandcarboncode.org.uk/> [Accessed 23 Jul. 2024].